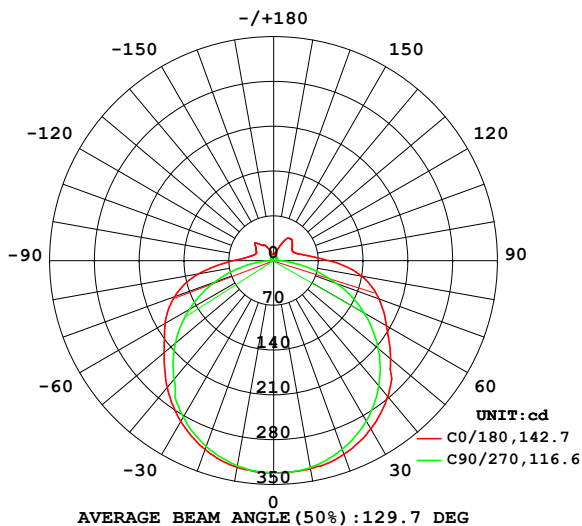


LUMINAIRE PHOTOMETRIC TEST REPORT

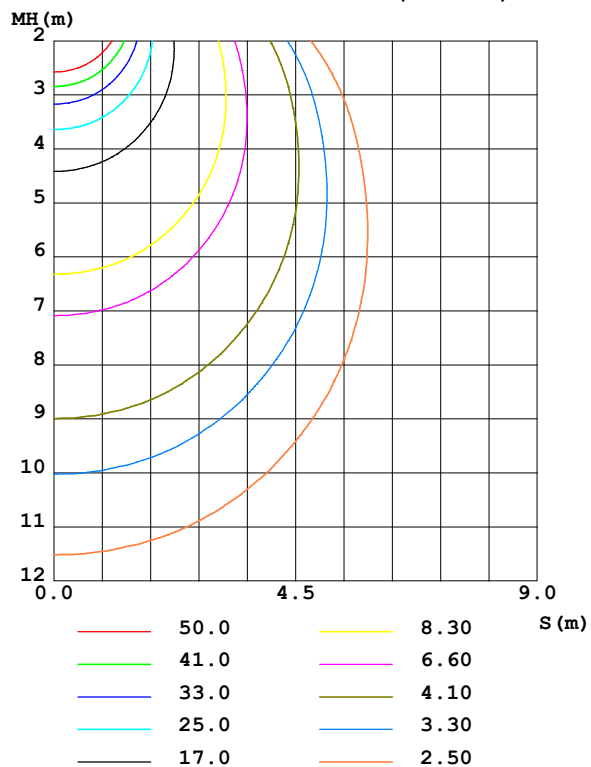
Test:U:101.40V I:0.1710A P:15.300W PF:0.8850 Freq:50.00Hz Lamp Flux:1275.35x1 lm		
NAME:	TYPE:	WEIGHT:
SPEC.:	DIM.:	SERIAL No.:
MFR.: Everfine	SUR.:	Shielding Angle:

DATA OF LAMP		PHOTOMETRIC DATA				Eff: 83.36 lm/W
MODEL	线条灯2700K	I _{max} (cd)	332.4	S/MH(C0/180)	1.36	
NOMINAL POWER(W)	15	LOR(%)	100.0	S/MH(C90/270)	1.30	
RATED VOLTAGE(V)	100	TOTAL FLUX(lm)	1275.4	η UP,DN(C0-180)	4.8,43.4	
NOMINAL FLUX(lm)	1275.35	CIE CLASS	SEMI-D.	η UP,DN(C180-360)	5.8,46.1	
LAMPS INSIDE	1	η up (%)	10.5	CIBSE SHR NOM	1.50	
TEST VOLTAGE(V)	100	η down (%)	89.5	CIBSE SHR MAX	1.50	

LUMINOUS INTENSITY DISTRIBUTION DIAGRAM



C0 PLANE ISOLUX DIAGRAM (UNIT:lx)



C Range: 0 - 360DEG
C Interval: 90.0DEG
Test Speed: HIGH
Temperature: 25.3°C
Operators: DAMIN
Test Date: 26 November 2025

γ Range: 0 - 180DEG
γ Interval: 1.0DEG
Test System: EVERFINE GO-2000B_V1 SYSTEM V2.00.459
Humidity: 65.0%
Test Distance: 8.186m [K=1.0000]
Remarks:

ZONAL FLUX DIAGRAM

ZONAL FLUX DIAGRAM:

γ	C0	C90	C180	C270					γ	Φ zone	Φ total	%lum, lamp
10	328.1	325.6	330.3	328.5					0- 10	31.50	31.50	2.47,2.47
20	313.9	309.1	321.9	313.8					10- 20	91.16	122.7	9.62,9.62
30	290.1	282.6	303.8	289.7					20- 30	140.3	263.0	20.6,20.6
40	258.7	242.5	277.5	255.9					30- 40	173.0	435.9	34.2,34.2
50	223.8	200.6	238.7	213.4					40- 50	184.9	620.9	48.7,48.7
60	196.1	152.1	203.7	163.3					50- 60	178.1	798.9	62.6,62.6
70	164.9	98.25	175.1	104.2					60- 70	156.4	955.4	74.9,74.9
80	119.8	42.82	139.6	46.90					70- 80	118.2	1074	84.2,84.2
90	63.13	4.611	86.58	6.174					80- 90	67.64	1141	89.5,89.5
100	38.67	3.367	50.46	4.159					90-100	33.27	1174	92.1,92.1
110	30.51	3.899	35.92	4.691					100-110	22.18	1197	93.8,93.8
120	31.69	4.520	33.69	5.273					110-120	18.25	1215	95.3,95.3
130	38.00	5.154	38.53	5.888					120-130	18.03	1233	96.7,96.7
140	34.52	5.867	43.86	6.390					130-140	17.61	1251	98.1,98.1
150	28.11	6.540	38.68	6.764					140-150	13.42	1264	99.1,99.1
160	18.14	7.139	19.51	7.192					150-160	7.676	1272	99.7,99.7
170	7.998	7.575	11.10	7.530					160-170	2.964	1275	99.9,99.9
180	7.508	7.808	7.469	7.795					170-180	0.7623	1275	100,100
DEG	LUMINOUS INTENSITY:cd									UNIT:lm		

Conical surface Flux(90deg): 528.27 lm

%lum = 41.4%

%lamp = 41.4%

Conical surface Flux(120deg): 798.93 lm

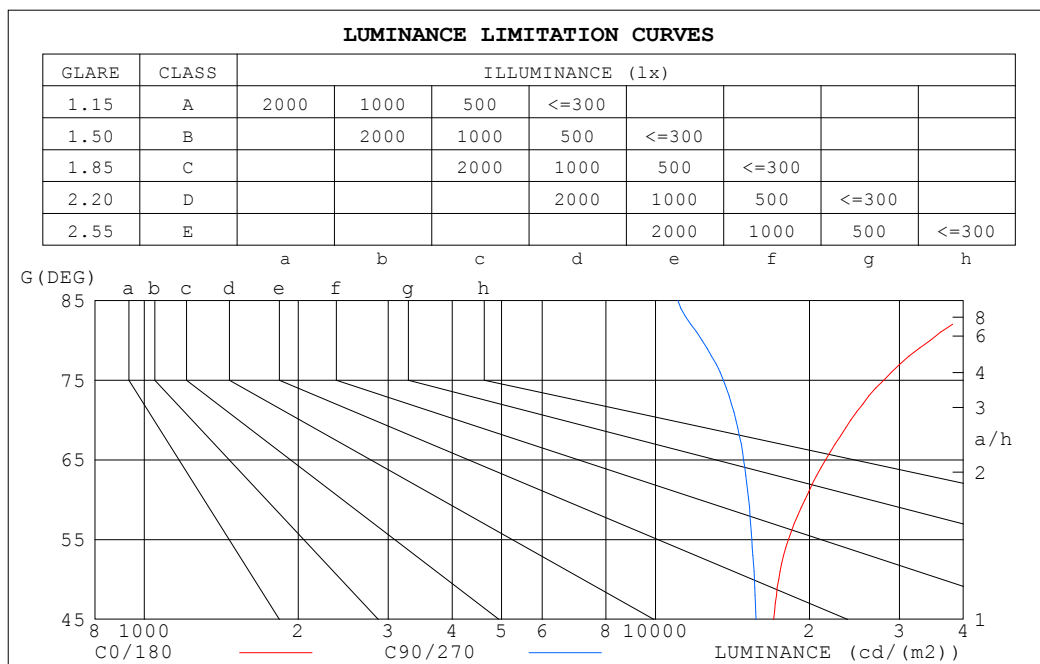
%lum = 62.6%

%lamp = 62.6%

C Range: 0 - 360DEG
 C Interval: 90.0DEG
 Test Speed: HIGH
 Temperature:25.3°C
 Operators:DAMIN
 Test Date:26 November 2025

γ Range: 0 - 180DEG
 γ Interval: 1.0DEG
 Test System:EVERFINE GO-2000B_V1 SYSTEM V2.00.459
 Humidity:65.0%
 Test Distance:8.186m [K=1.0000]
 Remarks:

LUMINANCE LIMITATION CURVES



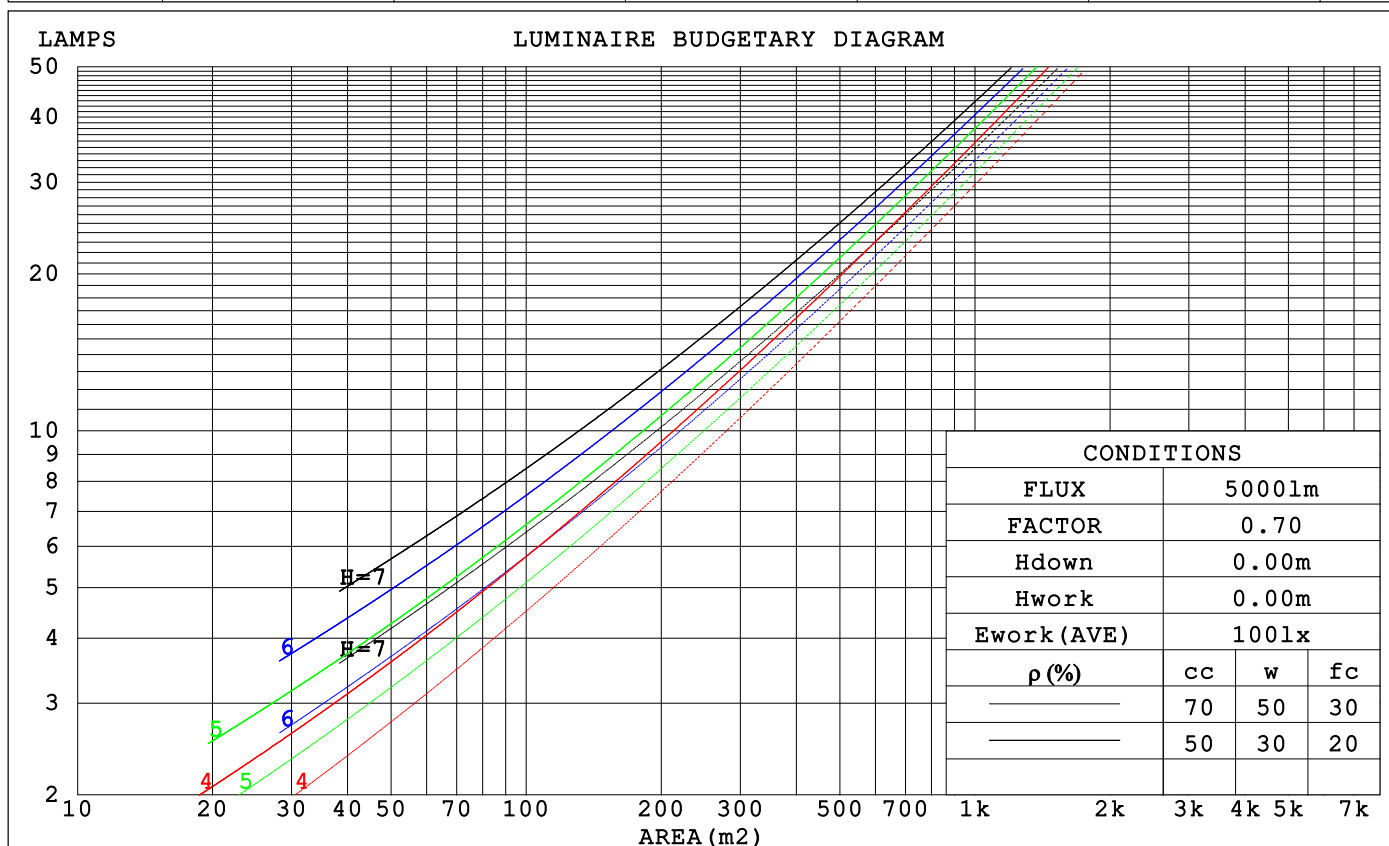
LUMINANCE cd/(m2)		
G (DEG)	C0/180	C90/270
85	50750	11053
80	34491	12329
75	27938	13579
70	24108	14363
65	21516	14872
60	19608	15214
55	18178	15438
50	17410	15607
45	17025	15731

C Range: 0 - 360DEG
C Interval: 90.0DEG
Test Speed: HIGH
Temperature: 25.3°C
Operators: DAMIN
Test Date: 26 November 2025

γ Range: 0 - 180DEG
γ Interval: 1.0DEG
Test System: EVERFINE GO-2000B_V1 SYSTEM V2.00.459
Humidity: 65.0%
Test Distance: 8.186m [K=1.0000]
Remarks:

CU AND LUMINAIRE BUDGETARY ESTIMATE DIAGRAM

pcc	80%			70%			50%			30%			10%			0
pw	50%	30%	10%	50%	30%	10%	50%	30%	10%	50%	30%	10%	50%	30%	10%	0
pfc	20%			20%			20%			20%			20%			0
RCR	RCR:Room Cavity Ratio			Coefficients of Utilization(CU)												
0.0	1.17	1.17	1.17	1.13	1.13	1.13	1.05	1.05	1.05	.99	.99	.99	.92	.92	.92	.89
1.0	.99	.94	.89	.95	.91	.87	.89	.85	.82	.83	.80	.78	.78	.76	.73	.71
2.0	.85	.77	.71	.82	.75	.69	.77	.71	.66	.72	.67	.63	.67	.63	.60	.57
3.0	.74	.65	.58	.71	.63	.57	.67	.60	.54	.63	.57	.52	.59	.54	.50	.47
4.0	.65	.56	.48	.63	.54	.48	.59	.52	.46	.55	.49	.44	.52	.47	.42	.40
5.0	.58	.48	.41	.56	.47	.41	.53	.45	.39	.49	.43	.38	.46	.41	.36	.34
6.0	.52	.42	.36	.50	.41	.35	.47	.40	.34	.45	.38	.33	.42	.36	.32	.29
7.0	.47	.38	.31	.45	.37	.31	.43	.35	.30	.40	.34	.29	.38	.32	.28	.26
8.0	.42	.34	.28	.41	.33	.27	.39	.32	.27	.37	.31	.26	.35	.29	.25	.23
9.0	.39	.31	.25	.38	.30	.24	.36	.29	.24	.34	.28	.23	.32	.27	.22	.20
10.0	.36	.28	.22	.35	.27	.22	.33	.26	.22	.32	.25	.21	.30	.24	.20	.18



C Range: 0 - 360DEG
 C Interval: 90.0DEG
 Test Speed: HIGH
 Temperature:25.3℃
 Operators:DAMIN
 Test Date:26 November 2025

γ Range: 0 - 180DEG
 γ Interval: 1.0DEG
 Test System:EVERFINE GO-2000B_V1 SYSTEM V2.00.459
 Humidity:65.0%
 Test Distance:8.186m [K=1.0000]
 Remarks:

WEC AND CCEC

ρ_{cc}	80%			70%			50%			30%			10%			0
ρ_w	50%	30%	10%	50%	30%	10%	50%	30%	10%	50%	30%	10%	50%	30%	10%	0
ρ_{fc}	20%			20%			20%			20%			20%			0
RCR	RCR:Room Cavity Ratio						Wall Exitance Coefficients (WEC)									
0.0																
1.0	.361	.205	.065	.351	.200	.064	.331	.190	.061	.313	.181	.058	.297	.172	.055	
2.0	.322	.176	.054	.312	.172	.053	.295	.164	.051	.279	.156	.049	.264	.149	.047	
3.0	.290	.154	.046	.281	.151	.045	.266	.144	.044	.251	.138	.042	.237	.131	.041	
4.0	.263	.137	.040	.255	.134	.039	.241	.128	.038	.228	.122	.037	.216	.117	.036	
5.0	.240	.122	.035	.233	.120	.035	.220	.115	.034	.209	.110	.033	.197	.105	.032	
6.0	.221	.111	.032	.215	.108	.031	.203	.104	.030	.192	.100	.029	.182	.096	.028	
7.0	.204	.101	.029	.198	.099	.028	.188	.095	.027	.178	.091	.027	.169	.088	.026	
8.0	.190	.093	.026	.185	.091	.026	.175	.087	.025	.166	.084	.024	.157	.081	.024	
9.0	.177	.086	.024	.172	.084	.024	.164	.081	.023	.155	.078	.022	.147	.075	.022	
10.0	.166	.080	.022	.162	.078	.022	.154	.075	.021	.146	.072	.021	.139	.070	.020	

ρ_{cc}	80%			70%			50%			30%			10%			0
ρ_w	50%	30%	10%	50%	30%	10%	50%	30%	10%	50%	30%	10%	50%	30%	10%	0
ρ_{fc}	20%			20%			20%			20%			20%			0
RCR	RCR:Room Cavity Ratio						Ceiling Cavity Exitance Coefficients (CCEC)									
0.0	.271	.271	.271	.231	.231	.231	.158	.158	.158	.091	.091	.091	.029	.029	.029	
1.0	.265	.236	.211	.226	.203	.182	.155	.140	.126	.089	.081	.073	.029	.026	.024	
2.0	.258	.213	.176	.221	.183	.152	.151	.127	.106	.087	.074	.062	.028	.024	.020	
3.0	.250	.196	.153	.214	.169	.133	.147	.118	.093	.085	.069	.055	.027	.022	.018	
4.0	.242	.183	.138	.208	.159	.120	.143	.110	.085	.083	.065	.050	.027	.021	.016	
5.0	.235	.173	.128	.202	.150	.111	.139	.105	.079	.080	.062	.047	.026	.020	.015	
6.0	.227	.165	.121	.195	.143	.105	.135	.100	.074	.078	.059	.044	.025	.019	.015	
7.0	.220	.159	.115	.189	.137	.101	.131	.096	.071	.076	.057	.042	.025	.019	.014	
8.0	.214	.153	.111	.184	.133	.097	.127	.093	.069	.074	.055	.041	.024	.018	.014	
9.0	.207	.148	.108	.179	.129	.094	.124	.090	.067	.072	.053	.040	.023	.018	.013	
10.0	.202	.144	.105	.174	.125	.092	.121	.088	.065	.070	.052	.039	.023	.017	.013	

C Range: 0 - 360DEG
 C Interval: 90.0DEG
 Test Speed: HIGH
 Temperature: 25.3°C
 Operators: DAMIN
 Test Date: 26 November 2025

γ Range: 0 - 180DEG
 γ Interval: 1.0DEG
 Test System: EVERFINE GO-2000B_V1 SYSTEM V2.00.459
 Humidity: 65.0%
 Test Distance: 8.186m [K=1.0000]
 Remarks:

UGR(Unified Glare Rating) Table

ceiling/cavity	0.7	0.7	0.5	0.5	0.3	0.7	0.7	0.5	0.5	0.3
walls	0.5	0.3	0.5	0.3	0.3	0.5	0.3	0.5	0.3	0.3
working plane	0.2	0.2	0.2	0.2	0.2	0.2	0.2	0.2	0.2	0.2
Room dimensions	Viewed crosswise					Viewed endwise				
x = 2H y = 2H	22.4	23.9	22.8	24.3	24.7	21.6	23.0	22.0	23.4	23.8
3H	24.9	26.2	25.3	26.6	27.1	23.2	24.6	23.7	25.0	25.5
4H	26.1	27.4	26.6	27.8	28.3	23.9	25.2	24.4	25.6	26.1
6H	27.4	28.6	27.9	29.1	29.6	24.4	25.6	24.9	26.1	26.6
8H	28.0	29.2	28.5	29.7	30.2	24.6	25.7	25.1	26.2	26.7
12H	28.7	29.8	29.2	30.3	30.8	24.7	25.8	25.2	26.3	26.8
4H 2H	23.1	24.3	23.5	24.8	25.2	22.4	23.7	22.9	24.1	24.6
3H	25.7	26.8	26.2	27.3	27.8	24.3	25.4	24.8	25.9	26.5
4H	27.1	28.1	27.6	28.6	29.2	25.2	26.2	25.7	26.7	27.3
6H	28.6	29.5	29.1	30.0	30.6	25.8	26.8	26.4	27.3	27.9
8H	29.3	30.1	29.8	30.7	31.3	26.1	26.9	26.6	27.5	28.1
12H	30.0	30.8	30.6	31.4	32.0	26.2	27.0	26.8	27.6	28.2
8H 4H	27.4	28.3	28.0	28.8	29.4	25.8	26.6	26.4	27.2	27.8
6H	29.1	29.8	29.7	30.4	31.0	26.7	27.4	27.3	28.0	28.7
8H	29.9	30.6	30.6	31.2	31.9	27.1	27.7	27.7	28.3	29.0
12H	30.9	31.5	31.5	32.1	32.8	27.4	27.9	28.0	28.5	29.2
12H 4H	27.4	28.2	28.0	28.8	29.4	25.9	26.7	26.5	27.3	27.9
6H	29.2	29.8	29.8	30.4	31.1	27.0	27.6	27.6	28.2	28.9
8H	30.1	30.7	30.7	31.3	32.0	27.4	28.0	28.1	28.6	29.3
Variations with the observer position at spacings(CIE Pub.117):										
S = 1.0H	+ 0.1 / - 0.1					+ 0.1 / - 0.2				
1.5H	+ 0.2 / - 0.2					+ 0.2 / - 0.3				
2.0H	+ 0.2 / - 0.3					+ 0.2 / - 0.4				

CIE Pub.117, 1275 lm Total Lamp Luminous Flux Corrected ($8\log(F/F_0) = 0.8$)
Area: 0.02 m2

C Range: 0 - 360DEG
C Interval: 90.0DEG
Test Speed: HIGH
Temperature:25.3℃
Operators:DAMIN
Test Date:26 November 2025

γ Range: 0 - 180DEG
 γ Interval: 1.0DEG
Test System:EVERFINE GO-2000B_V1 SYSTEM V2.00.459
Humidity:65.0%
Test Distance:8.186m [K=1.0000]
Remarks:

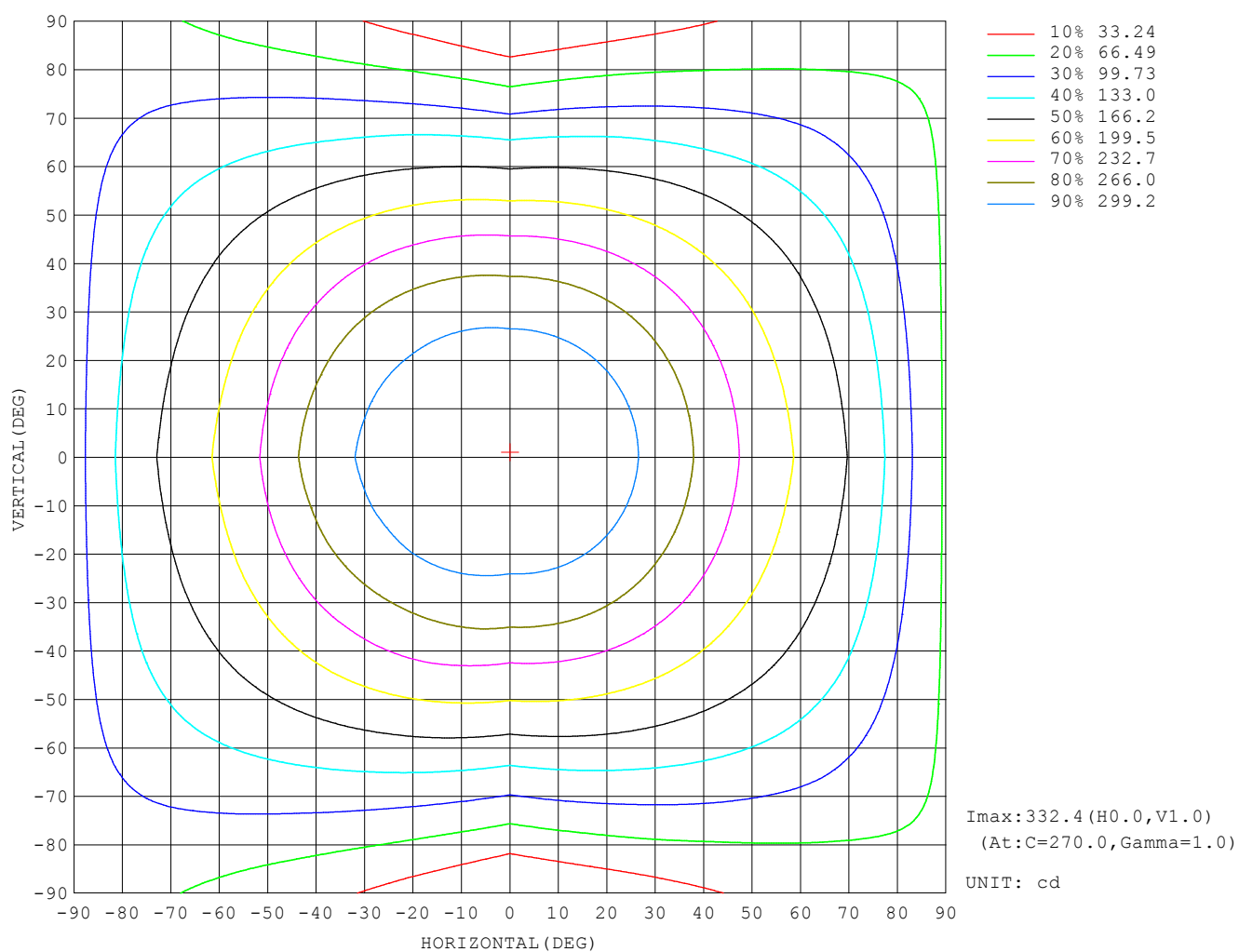
UTILIZATION FACTORS TABLE

REFLECTANCE										
Ceiling	0.8	0.8	0.8	0.7	0.7	0.7	0.5	0.5	0.5	0
Walls	0.7	0.5	0.3	0.7	0.5	0.3	0.7	0.5	0.3	0
Working plane	0.2	0.2	0.2	0.2	0.2	0.2	0.2	0.2	0.2	0
ROOM INDEX	UTILIZATION FACTORS (PERCENT) $k(RI) \times RCR = 5$									
$k = 0.60$	51	39	32	50	39	32	49	38	31	25
0.80	61	48	41	59	48	40	57	46	39	32
1.00	69	57	49	67	56	48	64	56	47	39
1.25	76	64	56	74	63	55	70	61	54	45
1.50	81	70	62	79	68	61	74	66	59	49
2.00	88	78	70	85	76	69	81	73	67	56
2.50	92	83	76	90	81	74	84	77	72	61
3.00	96	88	81	93	85	79	87	81	76	64
4.00	101	93	88	97	91	86	91	86	82	69
5.00	103	97	92	100	94	90	94	89	85	73
ROOM INDEX	UF (total)									Direct
According to DIN EN 13032-2 2004			Suspended					SHRNOM = 1.25		

C Range: 0 - 360DEG
C Interval: 90.0DEG
Test Speed: HIGH
Temperature: 25.3°C
Operators: DAMIN
Test Date: 26 November 2025

γ Range: 0 - 180DEG
γ Interval: 1.0DEG
Test System: EVERFINE GO-2000B_V1 SYSTEM V2.00.459
Humidity: 65.0%
Test Distance: 8.186m [K=1.0000]
Remarks:

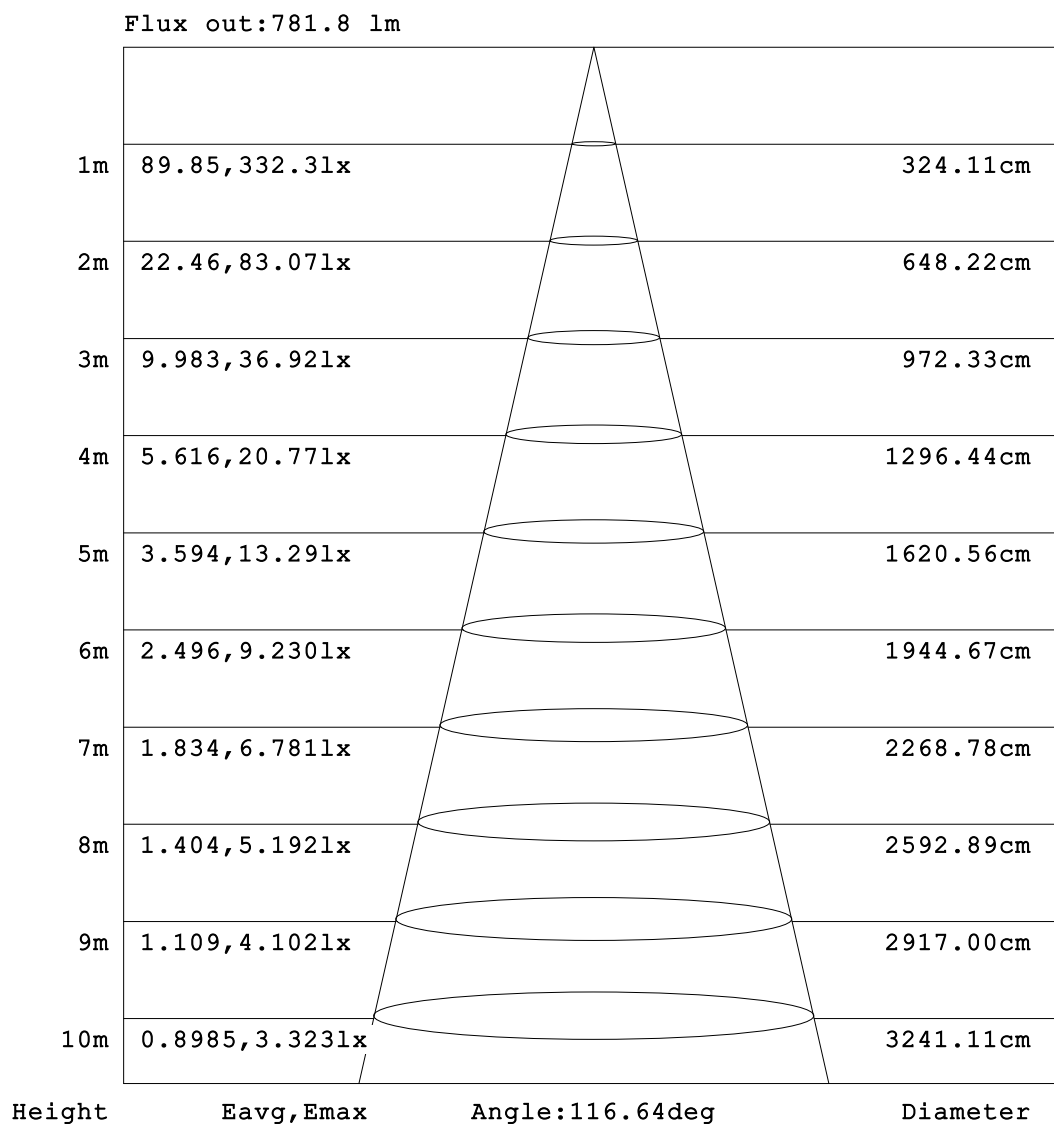
ISOCANDELA DIAGRAM



C Range: 0 - 360DEG
C Interval: 90.0DEG
Test Speed: HIGH
Temperature: 25.3°C
Operators: DAMIN
Test Date: 26 November 2025

γ Range: 0 - 180DEG
 γ Interval: 1.0DEG
Test System: EVERFINE GO-2000B_V1 SYSTEM V2.00.459
Humidity: 65.0%
Test Distance: 8.186m [K=1.0000]
Remarks:

AAI Figure

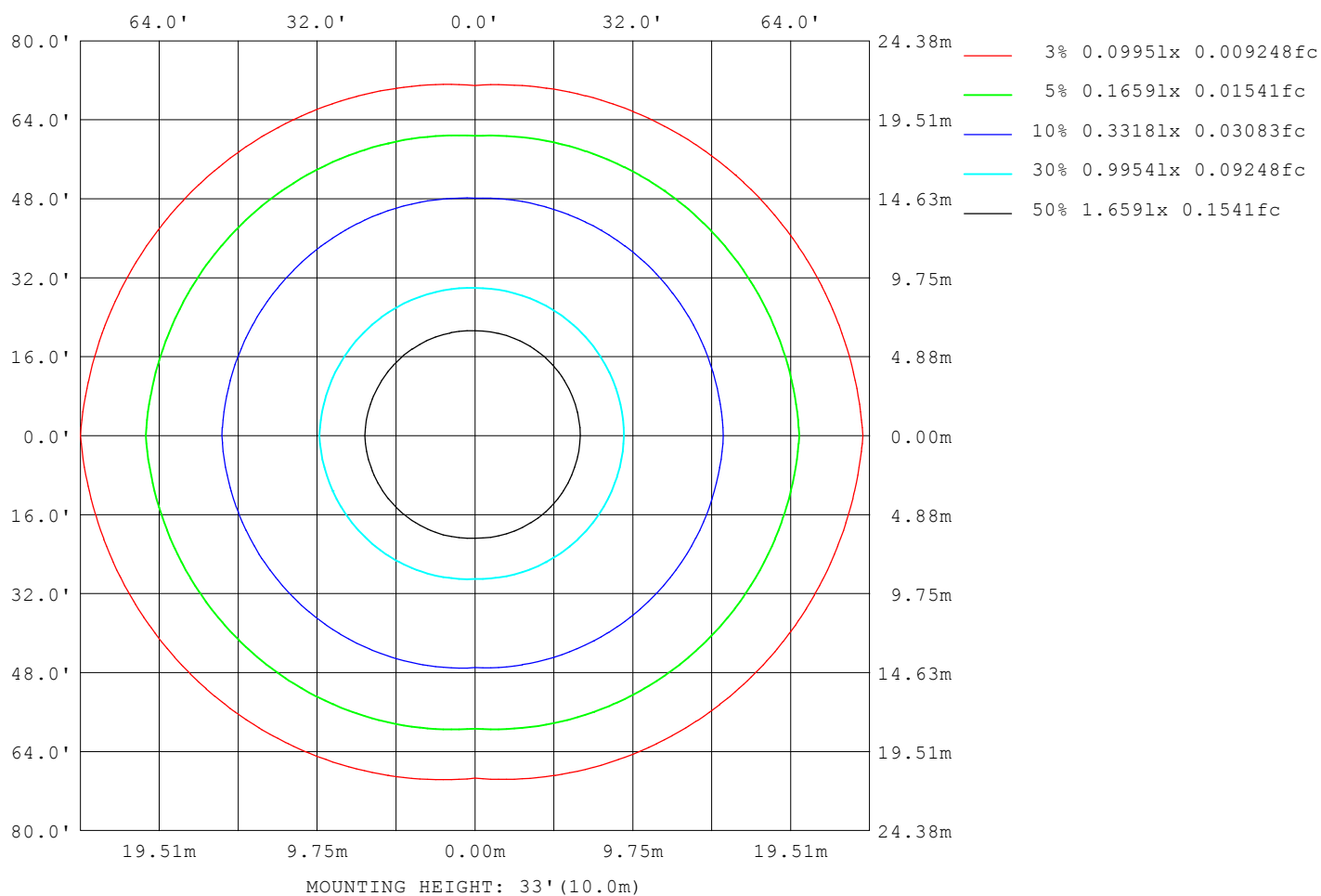


Note:The Curves indicate the illuminated area and the average illumination when the luminaire is at different distance.

C Range: 0 - 360DEG
 C Interval: 90.0DEG
 Test Speed: HIGH
 Temperature:25.3°C
 Operators:DAMIN
 Test Date:26 November 2025

γ Range: 0 - 180DEG
 γ Interval: 1.0DEG
 Test System:EVERFINE GO-2000B_V1 SYSTEM V2.00.459
 Humidity:65.0%
 Test Distance:8.186m [K=1.0000]
 Remarks:

ISOLUX DIAGRAM



C Range: 0 - 360DEG
C Interval: 90.0DEG
Test Speed: HIGH
Temperature: 25.3°C
Operators: DAMIN
Test Date: 26 November 2025

γ Range: 0 - 180DEG
γ Interval: 1.0DEG
Test System: EVERFINE GO-2000B_V1 SYSTEM V2.00.459
Humidity: 65.0%
Test Distance: 8.186m [K=1.0000]
Remarks:

LED Avg.L Report

Test:U:101.40V I:0.1710A P:15.300W PF:0.8850 Freq:50.00Hz Lamp Flux:1275.35x1 lm		
NAME:	TYPE:	WEIGHT:
SPEC.:	DIM.:	SERIAL No.:
MFR.: Everfine	SUR.:	Shielding Angle:

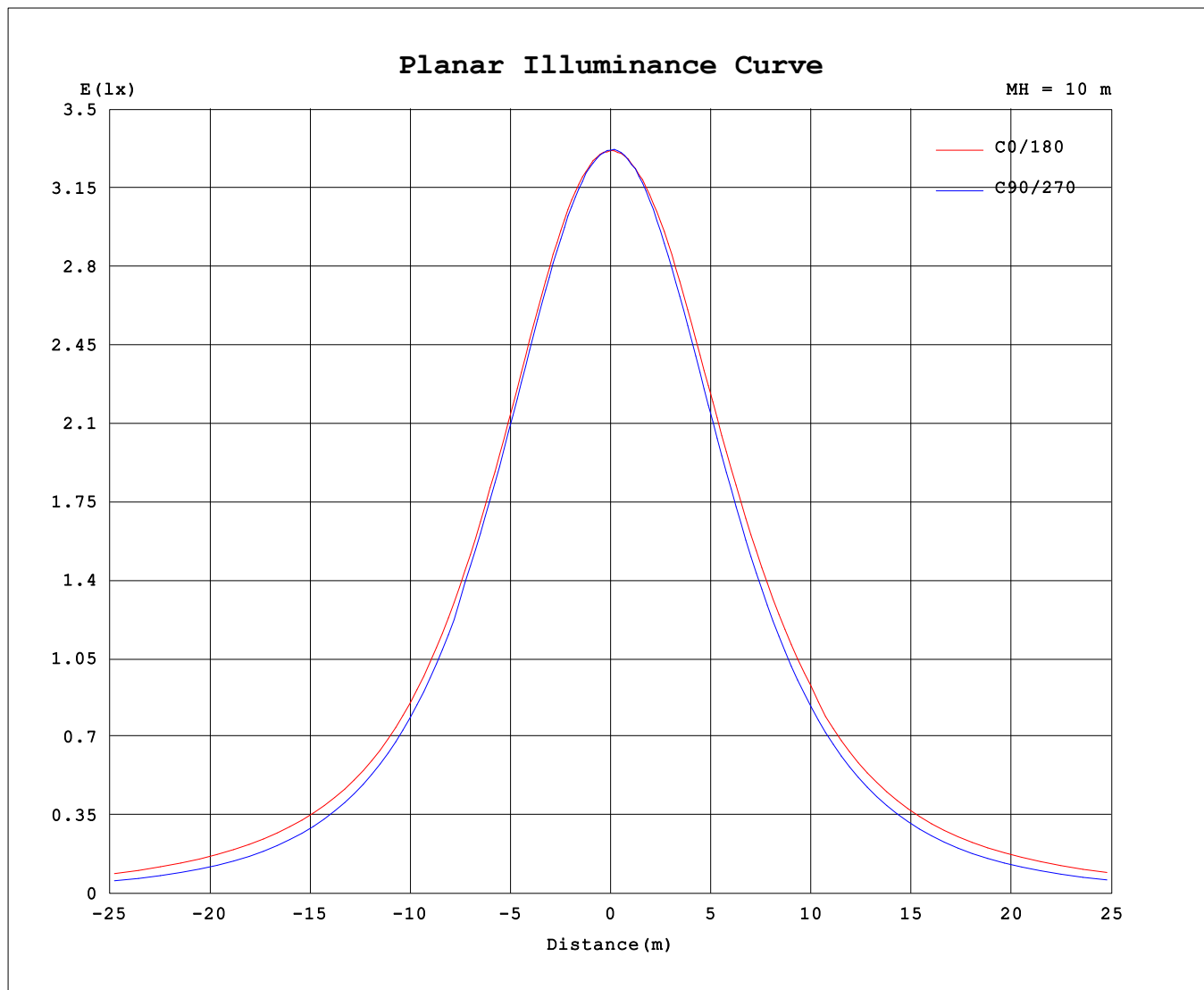
AvgL	cd/m2
L_0~180 (65) av	21986
L_0~180 (75) av	29340
L_0~180 (85) av	58362
L_90~270 (65) av	15458
L_90~270 (75) av	14007
L_90~270 (85) av	11998
L_45 (65) av	17936
L_45 (75) av	19845
L_45 (85) av	29860

Standard: GB/T 29293-2012

C Range: 0 - 360DEG
C Interval: 90.0DEG
Test Speed: HIGH
Temperature:25.3℃
Operators:DAMIN
Test Date:26 November 2025

γ Range: 0 - 180DEG
γ Interval: 1.0DEG
Test System:EVERFINE GO-2000B_V1 SYSTEM V2.00.459
Humidity:65.0%
Test Distance:8.186m [K=1.0000]
Remarks:

Planar Illuminance Curve



C Range: 0 - 360DEG
 C Interval: 90.0DEG
 Test Speed: HIGH
 Temperature: 25.3°C
 Operators: DAMIN
 Test Date: 26 November 2025

γ Range: 0 - 180DEG
 γ Interval: 1.0DEG
 Test System: EVERFINE GO-2000B_V1 SYSTEM V2.00.459
 Humidity: 65.0%
 Test Distance: 8.186m [K=1.0000]
 Remarks:

LUMINOUS DISTRIBUTION INTENSITY DATA

Table--1

UNIT: cd

C (DEG) γ (DEG)	0	90	180	270															
0	332	332	332	332															
5	331	330	332	331															
10	328	326	330	328															
15	322	319	328	322															
20	314	309	322	314															
25	303	297	314	303															
30	290	283	304	290															
35	275	266	292	274															
40	259	242	277	256															
45	241	222	262	236															
50	224	201	239	213															
55	209	177	221	189															
60	196	152	204	163															
65	182	126	190	136															
70	165	98.3	175	104															
75	145	70.3	159	74.7															
80	120	42.8	140	46.9															
85	88.5	19.3	115	22.6															
90	63.1	4.61	86.6	6.17															
95	46.9	3.15	64.4	4.17															
100	38.7	3.37	50.5	4.16															
105	33.5	3.59	41.3	4.41															
110	30.5	3.90	35.9	4.69															
115	29.8	4.23	33.6	4.96															
120	31.7	4.52	33.7	5.27															
125	34.1	4.86	35.4	5.59															
130	38.0	5.15	38.5	5.89															
135	39.0	5.49	41.1	6.17															
140	34.5	5.87	43.9	6.39															
145	29.1	6.21	42.8	6.57															
150	28.1	6.54	38.7	6.76															
155	22.2	6.86	28.7	6.98															
160	18.1	7.14	19.5	7.19															
165	8.90	7.38	14.3	7.40															
170	8.00	7.57	11.1	7.53															
175	7.48	7.74	7.77	7.57															
180	7.51	7.81	7.47	7.79															

C Range: 0 - 360DEG

C Interval: 90.0DEG

Test Speed: HIGH

Temperature:25.3℃

Operators:DAMIN

Test Date:26 November 2025

γ Range: 0 - 180DEG

γ Interval: 1.0DEG

Test System:EVERFINE GO-2000B_V1 SYSTEM V2.00.459

Humidity:65.0%

Test Distance:8.186m [K=1.0000]

Remarks: